



Our research connects the voices of communities to change-makers for more inclusive societies.

SAMUEL HALL EAST AND SOUTH AFRICA ORGANISATIONAL PROFILE



TURNING LEARNING INTO PRACTICE

DEFINITION

Samuel Hall is a social enterprise dedicated to migration and displacement research. Our thematic pillar approach enables us to conduct empirical research on crosscutting trends and to bridge the information gaps between academics, researchers, and decision-makers.

DIFFERENTIATION

Samuel Hall's established network of researchers and field teams has allowed us to maintain high standards of reporting and due diligence in remote and complex environments. It has also allowed our work to be ethical and impactful in local contexts.

DELIVERABLES

We produce reports, research and policy briefs; methodologies adapted to field research and operational tools; and dissemination materials.

We provide our partners with:

- Access to the world's most complex and fragile settings across the Global South
- High-quality expert analysis based on contextual knowledge and academic rigour
- Actionable and adaptive counsel

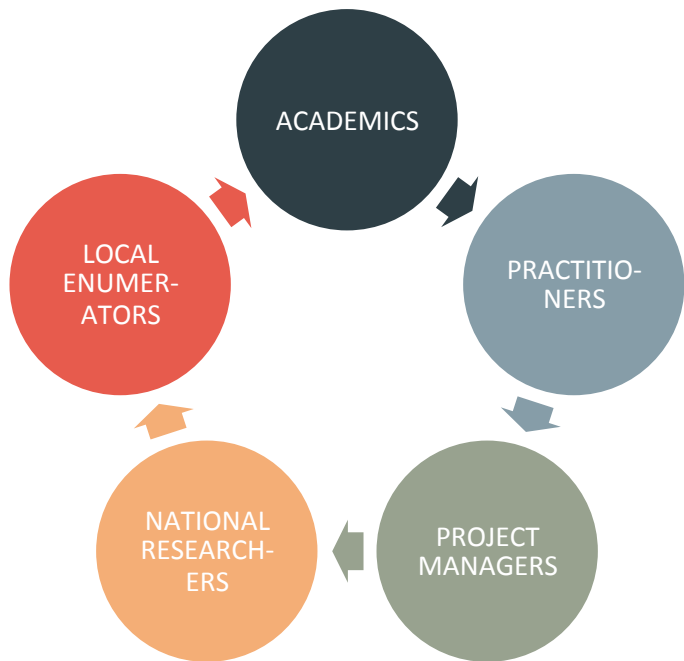
OUR RESEARCH PILLARS

Samuel Hall's themed pillar approach enables us to conduct **empirical primary research and in-house analysis** on essential crosscutting issues in hard-to-reach locations. The numerous outcomes of the SH approach are a tailored implementation of programmes, the creation of innovative methods and tools for field-tested research that can influence better regional and global policies.



Our pillars will each contribute to learning and knowledge through a wide variety of outputs linked to their expertise, such as publications, learning events, workshops, training sessions, academic papers and policy briefs.

THE SAMUEL HALL TEAM



Samuel Hall's interdisciplinary team has diverse backgrounds in political science, economics, sociology, international development, anthropology, and philosophy, in addition to on-the-ground experience operating in challenging and demanding environments.

Our staff members and associate experts demonstrate:

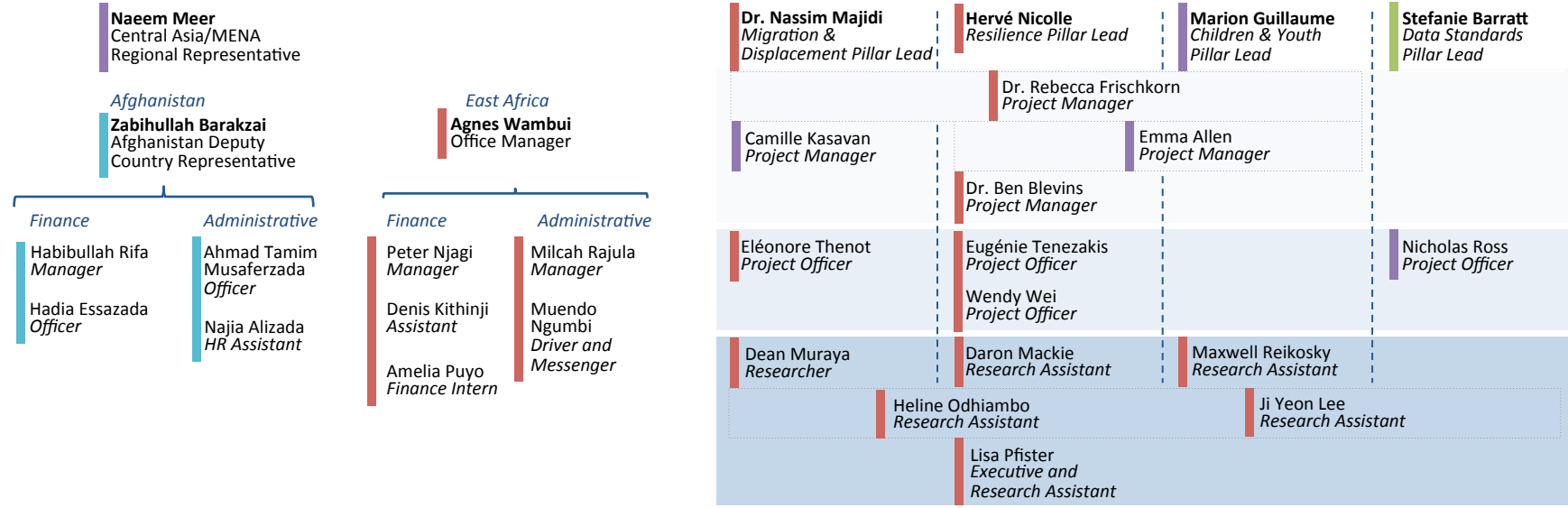
- Ph.D. and Masters qualifications from leading universities in North America, Europe, Asia and Africa
- Sector knowledge acquired through continuous partnerships with academic experts in political science, economy, justice, health, migration, etc.
- Field experience acquired through more than ten years of sustained cooperation with stakeholders from national capitals to remote villages



Nassim Majidi + Hervé Nicolle
Co-Founders, Co-Directors

Operations

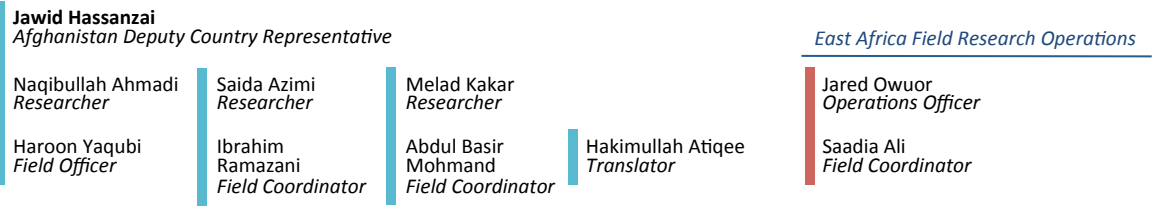
Research



Afghanistan Field Research Operations

East Africa Field Research Operations

Chart Key – --- Cross-pillar role
Senior Management
 * Nairobi Team
 * Kabul Team
 * Tunis Team
 * Berlin Team



SAMUEL HALL ETHOS

COMMUNITY-DRIVEN RESEARCH

Applicable research must be community-based and driven to derive applicable knowledge from the local environment. Our teams are drawn from complex and fragile environments. They represent communities affected by displacement as well as local integrated academics.

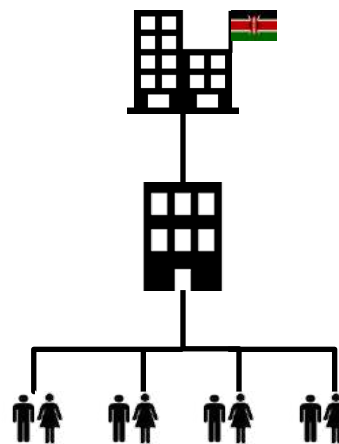
IMPACT

SH research feeds into global policies to ensure that necessary funding and programmatic shifts are reflected in the work of practitioners.

Samuel Hall
HQ - Nairobi

SH Field
Presence

Local field
researchers



Full-time staff based in Nairobi to design, oversee and communicate SH research

SH has trained local academics and researchers across the region

Local field enumerators have deep experience in quantitative and qualitative research



ACADEMIC PARTNERSHIPS AND AFFILIATIONS

Samuel Hall has successfully created cross-fertilising partnerships with universities and academic research groups to design robust theoretical and academic analytical frameworks and indicators.

Academic Linkages

Highlights

PAST PARTNERSHIPS



ONGOING PARTNERSHIPS



RESEARCH AFFILIATIONS



In 2018, SH joined **the New School's Research Platform on Cities, Migration and Membership** as a founding member. SH contributes to inclusion and forced migration themes.

SH Director Nassim Majidi serves as research associate at **Tufts International Feinstein Center, University of Wits African Center for Migration & Society, and University of Ghana Centre for Migration Studies.**

GLOBAL ACADEMIC CONSORTIA

GCRF SOUTH-SOUTH MIGRATION HUB

The Hub aims to study the potential of South-South migration to contribute to development. SH leads work packages focused on children and inequality along the Burkina Faso-Cote d'Ivoire, Egypt-Jordan, and Ethiopia-South Africa migration corridors.



EUTF BETTER MIGRATION MANAGEMENT

BMM aims to improve migration management in countries of origin and transit within the Horn of Africa. In Kenya, Ethiopia and Sudan, SH devises effective Communications for Change Strategies to ensure migrants can make informed migration decisions.

REGIONAL DEVELOPMENT AND PROTECTION PROGRAMME

SH co-leads the Dutch Ministry of Foreign Affairs Learning and Evaluation Team (LET) in Kenya, Uganda, Somalia, Ethiopia. The team measures regional partner impacts at to improve programing performance.



HORIZON2020 MIGNEX

The nine-body consortium contributes to an evidence-based understanding of how migration and development affect each other. SH leads research in Afghanistan and Ethiopia on the causes and consequences of migration.

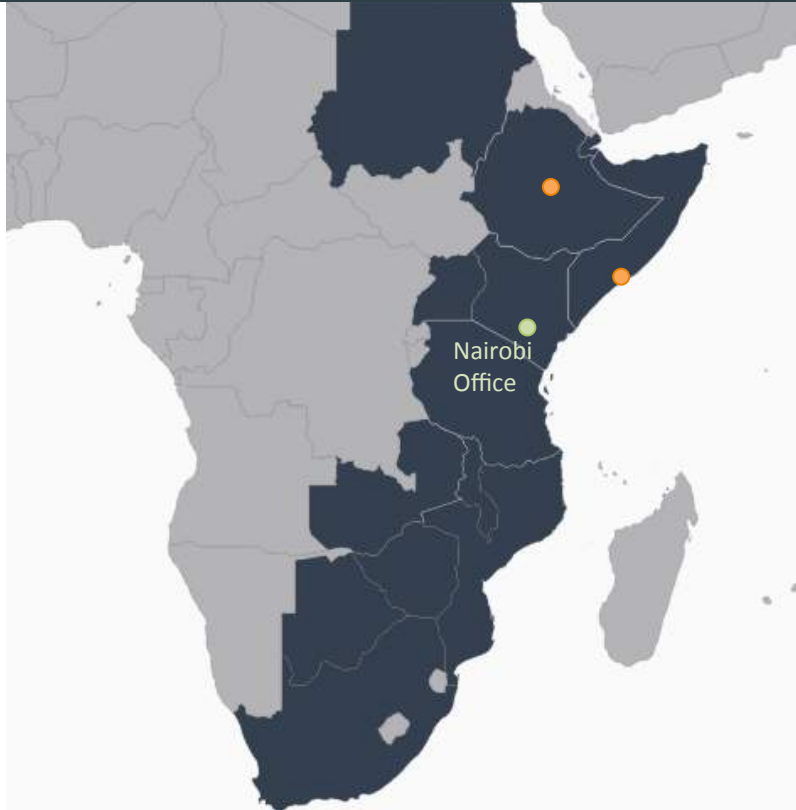


AT A GLANCE

Samuel Hall has been operating in East Africa since 2013. From its base in Nairobi, with a presence in Addis Ababa and Mogadishu, operations are supported by **over 20 local and international staff**. The organisation has conducted over **70 research projects in East and South Africa** and possesses unparalleled field access and migration expertise.

SAMUEL HALL – EAST AND SOUTH AFRICA

EAST AND SOUTH AFRICA GEOGRAPHIC FOOTPRINT



COUNTRIES

Botswana

Djibouti

Ethiopia

Kenya

Malawi

Mozambique

Somalia

Somaliland

South Africa

Sudan

Swaziland

Tanzania

Uganda

Zambia

Zimbabwe

OFFICES

Nairobi

Presence in:

Addis Ababa

Mogadishu

PROJECT HIGHLIGHTS IN MIGRATION: DURABLE SOLUTIONS TO DISPLACEMENT

OPEN SOCIETY FOUNDATIONS – Free and Safe Movement in East Africa (2018)

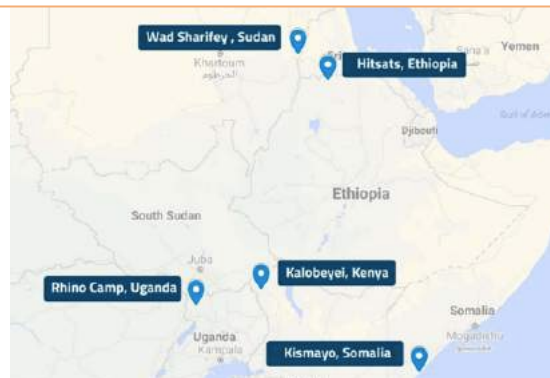
Samuel Hall, with the African Centre for Migration & Society and University of the Witwatersrand, supports the work of Open Society Foundations to promote people's safe and unencumbered movement across international borders. The research started with a question: what factors threaten the fulfilment of migrants' rights, and what factors support these? The research team embarked on a multi-region study analysing migration policy and practices in Central, East and Southern Africa. [The report](#) reviews findings at the East African sub-regional level, at a time of growing attention to fostering mobility and mobility's gain for protection and development.

DUTCH MFA – Learning and Evaluation for RDPP (2019)

Samuel Hall co-leads the Learning and Evaluation Team (LET) of the Dutch Government-funded Regional Development and Protection Programme in East and Horn of Africa. Implemented over a period of three years, the evaluation approach includes a learning component designed to support regional partners increase impact during the implementation of their interventions. [Results](#) ultimately support policy development in the field of migration and durable solutions in Ethiopia, Kenya, Somalia, Sudan and Uganda.

KNOWLEDGE CONTRIBUTIONS

- **Mellon Foundation** – Mobility, Temporality, and Africa's Future Politics (On-going)
- **EU, PRIO** – Aligning Migration Management and the Migration-Development Nexus (MIGNEX): Ethiopia, Somalia and Afghanistan (On-going)
- **NRC** – Cross-Border Displacement of Nigeria and Cameroon in the Lake Chad Basin (On-going)
- **DRC, ReDSS** – Longitudinal Solutions Analysis in Baidoa, Kismayo and Mogadishu (2019)



PROJECT HIGHLIGHTS IN MIGRATION: RETURN AND REINTEGRATION

DRC/NRC/IRC – Unprepared for (re)integration: Lessons Learned on Refugee Returns to Urban Areas (2020)

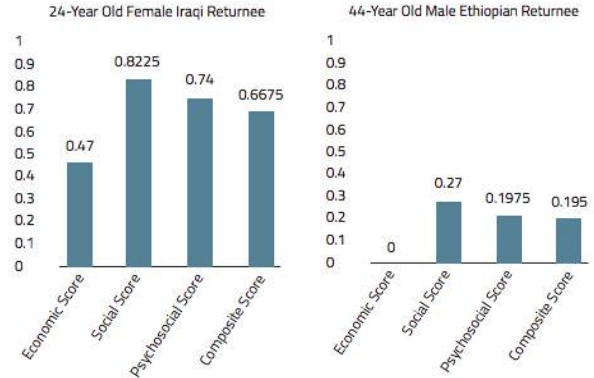
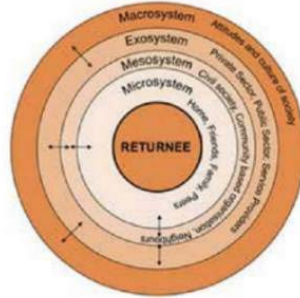
[This study](#) was designed to support the thinking and planning around (re)integration by identifying obstacles to preparedness of stakeholders for return and (re-)integration in refugee return settings, specifically in Afghanistan, Lebanon, Jordan, Kenya, Somalia and Syria. The study generates operational learning to enable NGOs, UN agencies, donors, government actors, and displacement-affected communities to strengthen (re-)integration programming. It asks, “How can returnees, receiving communities, governments and organisations be more effectively prepared so as to lay the ground work for sustainable (reintegration)?”

KNOWLEDGE CONTRIBUTIONS

- **UNICEF** – National Conflict Analysis of Oromia, Somali and SNNP Regions in Ethiopia (On-going)
- **NRC** – Cross-Border Displacement of Nigeria and Cameroon in the Lake Chad Basin (2019)
- **DRC, NRC, IRC** – Return and Reintegration of Refugees: Lessons Learned in Somalia, Afghanistan and Syria (2019)

IOM – Setting Standards for an Integrated Approach to Reintegration (2018)

In the framework of the [MEASURE project](#), IOM commissioned Samuel Hall to support operationalizing their revised approach to reintegration in the field of AVRR. Informed by the ecosystem approach, SH built a AVRR reintegration score based on 15 field-tested indicators, reflection economic, social and psychosocial dimensions. SH then identified and tested complementary and innovative practices on return and reintegration. The SH research team conducted an extensive consultation and in-country fieldwork in Afghanistan, Ethiopia, Iraq, Senegal and Somalia.



PROJECT HIGHLIGHTS IN RESILIENCE: JOBS, EMPLOYMENT AND DEVELOPMENT

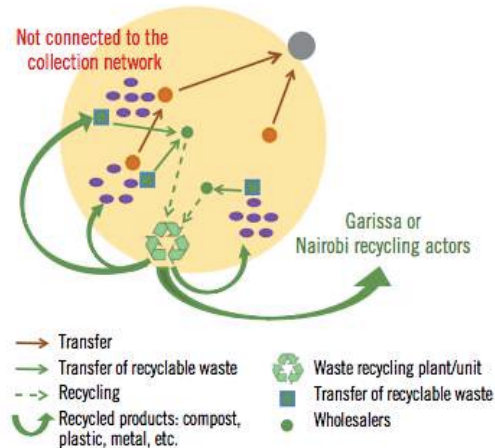
KNOWLEDGE CONTRIBUTIONS

- **ILO** – Rapid Integrated Labour Market Assessment in Somali and Tigray Regional States (On-going)
- **IOM** – Labour Market Analysis for Socio-Economic Reintegration of Vulnerable Persons and Returnees in North-East Nigeria (2019)
- **ILO** – Market Systems Analysis in Dadaab to Improve Refugee Livelihoods (2019)
- **IOM** – Enhancing CSO Engagement in Remittance Research and Building Linkages with the Tech and Banking Sectors (2019)
- **ILO** – Scoping Study on Public-Private Development Partnerships in the Renewable Energy Sector (2017)

ILO – Doing Business in Dadaab (2019)

Contrary to many popular perceptions, Dadaab is an area of opportunity with existing strengths that can be harnessed. This [market systems analysis](#) identifies these strengths as well as areas to build further. The findings provide the foundation for building opportunities to strengthen job creation and linkages between host and refugee communities as well as with private sector employers in Garissa county as well as with the capital. Two value chains in particular are highlighted – the agricultural sector and waste management sector.

Decentralized waste management model



IOM – Investing in Somali Youth (2015)

In [this study](#), Samuel Hall explores the youth-employment-migration nexus in Somaliland and Puntland. The research maps economic drivers of migration, youth livelihood opportunities, and interventions to support youth and local markets. Three nexus indicators – profile similarity, skills requirement, and perceptions – reveal trends in youth employability to understand supply-demand mismatch. The report is the first comprehensive study on Puntland/Somaliland’s youth migration and its linkages to livelihood opportunities.

PROJECT HIGHLIGHTS IN RESILIENCE: SOCIAL PROTECTION AND SOCIAL SAFETY NETS



WFP/MoLSA– Developing a Social Protection Policy for Somalia (2019)

The Ministry of Labour and Social Affairs of Somalia, with technical support from Samuel Hall, designed a National Social Protection Policy for Somalia. Samuel Hall hosted twenty consultations across all Member States to gather input from government, UN, NGO, donor, and private sector actors on what a government-led social protection system could look like within the context of Somalia. The final product was a [policy](#) endorsed by the Federal Government of Somalia that seeks, at the household level, to protect the basic needs of vulnerable people, prevent the risk of poverty, and transform existing societal structures.

KNOWLEDGE CONTRIBUTIONS

- **IOM, UNEP** – Assessment to Identify Climate Adaptive Solutions to Displacement in Somalia (On-going)
- **WFP** – Developing a Social Protection Policy for the Federal Government of Somalia (2019)
- **IOM** – Innovative Responses to Assisting Migrants Caught in Crisis – World Migration Report 2020
- **UDI, DRC** – Returning to Somalia: Setting Protection and Livelihood Standards (2015)

PROJECT HIGHLIGHTS IN CHILDREN AND YOUTH: YOUTH EDUCATION

Dubai Cares- Improving Access to and Quality of Early Childhood Education in Zanzibar (2018)

The importance of early childhood education (ECE) to a child's life has gained prominence worldwide. The present study assesses the relevance, effectiveness, efficiency, and sustainability of the Watoto Kwanza project, designed to address key challenges facing Zanzibar's ECE sector. Samuel Hall evaluated three key project elements – professional development of teachers, learning environments, and support networks. Based on these findings, [the report](#) proposes project-level and sectoral-level recommendations.

UNICEF – Ethiopia Context Assessment for IDP Children (2020)

UNICEF Ethiopia commissioned Samuel Hall to conduct a qualitative study to support UNICEF in planning and implementing education and child protection programmes in the Somali and Oromia regions. The goal of the research is to understand the drivers of displacement for IDPs, the responses to it, and how these tie to child protection and education, while bringing out the voices of IDPs – and IDP children in particular. The study will generate practical recommendations to UNICEF to strengthen its approach to child protection and education in the context of displacement in Ethiopia.



KNOWLEDGE CONTRIBUTIONS

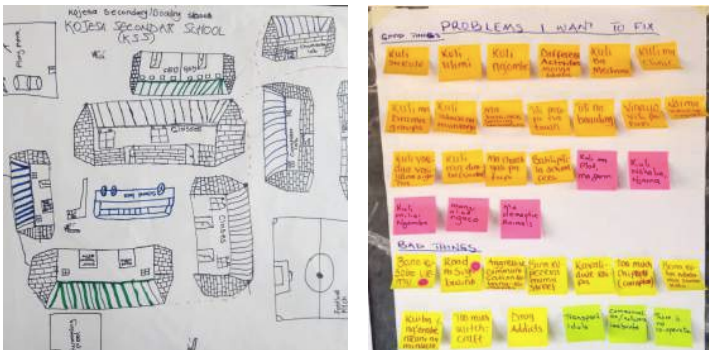
- **AKF** - End-line Evaluation of Youth Empowerment Programmes in Northern Kenya (On-going)
- **JRS** – International Needs Assessment on Professional and Post-Secondary Education in Kenya, Malawi, Chad (2019)
- **NRC** – TVET Tracer Study in Kismayo (2019)
- **ILO** – Project Document Preparation for Renewable Energy Skills Training PPDP in Somalia (2018)
- **Mercy Corps** – Qualitative and Quantitative Survey for Somali Youth Leadership Initiative (2016)

PROJECT HIGHLIGHTS IN CHILDREN AND YOUTH: QUALITATIVE RESEARCH WITH ADOLESCENTS

UNICEF – Dropping Out? Participatory Exploration of Adolescent School Journeys in Zambia (2019)

Commissioned by UNICEF, Samuel Hall conducted a qualitative study on how decisions are made on whether or not adolescents complete their schooling in Zambia. With fieldwork in eight districts across the country, the study provides an understanding of the decision-making process around school retention, and investigates the interplay between diverse factors and actors influencing schooling decisions. The research culminated in recommendations to enable implementing actors to develop youth-supportive and evidence-based education interventions.

Participatory tools used in Round Robin sessions with adolescent groups



UNICEF – Evaluation of the Youth Education Pack Programme in Somalia (2017)

Samuel Hall was commissioned by UNICEF to evaluate the UNICEF YEP programme and identify lessons-learned from providing informal education in Somalia. The central question of this evaluation was “*Has the implementation of YEP in Somalia had an impact on conflict drivers among marginalised youth by reducing reliance on negative coping strategies and improving access to sustainable livelihoods?*”

CROSS-PILLAR HIGHLIGHTS

Given the multi-dimensional nature of development contexts, cross pillar collaboration within Samuel Hall is common. Working across pillars harnesses the collective expertise of multiple themes to provide actionable recommendations for particularly complex fields, such as mixed migration.

Dutch MFA/Mercy Corps - Comparative analysis of the drivers of migration

[The study](#) aimed to fill identified knowledge gaps on the influence of youth interventions on migration intentions in fragile and conflict-affected settings to inform holistic programming. Based on **P1-P2-P5 collaborative research**, the findings strengthened the evidence-base of donor-supported policies addressing the root causes and drivers of mixed migration flows, and added a comparative component to our understanding of Afghanistan and Somalia's mixed migration dynamics.

Figure 1. Negative correlation between migration intentions and socio-economic status/welfare

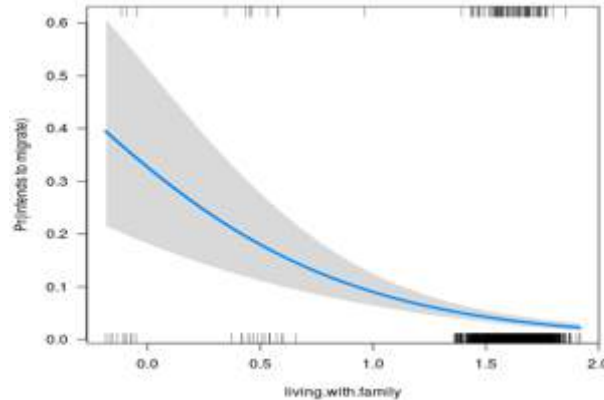
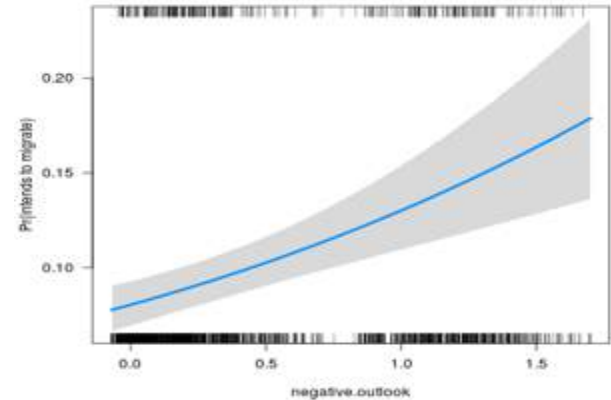


Figure 2. Positive correlation between migration intentions and the absence of perspectives in life



(Source: 2018 Samuel Hall *Comparative analysis of drivers of migration*)

CROSS-PILLAR HIGHLIGHTS: MONITORING AND EVALUATION

KNOWLEDGE CONTRIBUTIONS

- **Dutch MFA** – Outcome, Learning and Evaluation for the Regional Development and Protection Programme (On-going)
- **AKF** - End-line Evaluation of Youth Empowerment Programmes in Northern Kenya (On-going)
- **DRC, DEMAC** – Evaluation of Six Diaspora-Led Humanitarian Interventions in Somalia and Syria (2018)
- **EU** – Mid-Term Evaluation of the EU Trust Fund Programme: Support to the Development of Kalobeyei, Kenya (2018)
- **CARE** – Final Programme Evaluation of the Somalia, Somaliland and Puntland Joint Response (2017)

British Council– Better Migration Management Component 4 (2019)

Better Migration Management (BMM) Component 4 focused on providing potential migrants with information on safe migration in countries of origin and transit within the Horn of Africa. Strategic migration communication campaigns (SMCCs) have become a common yet contested tool to reduce irregular migration. Over a three-year period, Samuel Hall collected baseline and endline data from all target areas and held learning workshops with CSOs and key partners to evaluate the results of the SMCC approach within the BMM framework. Synthesis of the data revealed successes and challenges to the approach and implementation of information sharing interventions on migration management.

Figure. Overview of Kenya CSO themes and methods of information sharing

Objectives / Partner	Knowledge on migration	Legal alternatives	Local opportunities	Social dialogue / Community links	Life skills training	Referrals
KMYA	LINKAGES MADE	LINKAGES MADE	DIRECT FOCUS			LINKAGES MADE
HAART Kenya	DIRECT FOCUS	DIRECT FOCUS				LINKAGES MADE
Trace Kenya	DIRECT FOCUS	DIRECT FOCUS				LINKAGES MADE

DIRECT FOCUS
 LINKAGES MADE
 NO FOCUS OR LINK

CROSS-PILLAR HIGHLIGHTS: MULTI-DIMENSIONAL INTEGRATION INDEX DESIGN

The Multi-Dimensional Integration Index (MDI): Beyond Livelihoods and Vulnerability

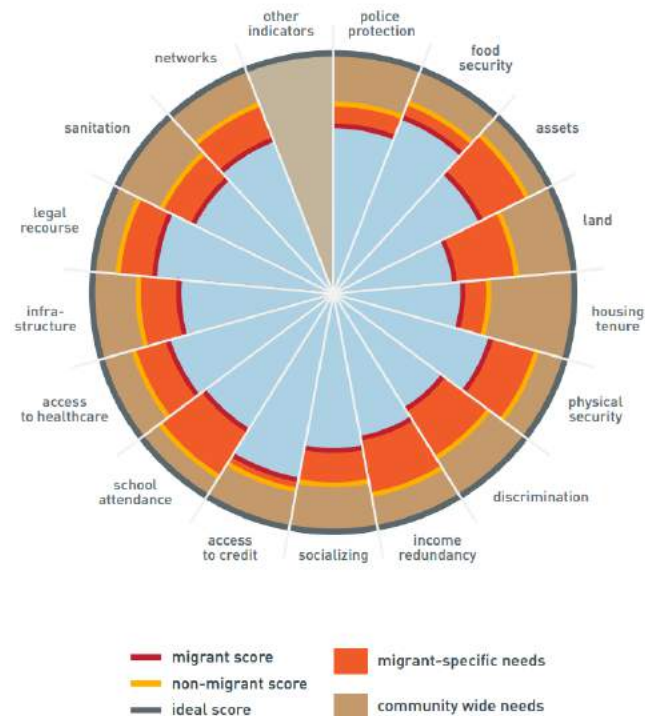
The initial objective of the project was to establish a tool to measure post-return outcomes, starting with refugee returnees. Since, it has become a versatile tool which can be adapted to refugees, internally displaced persons etc. to assess the multi-dimensional integration of the protracted displaced and returnees at large. It has been utilized as:

- A poverty and vulnerability index taken up by ECHO
- A youth-employment comparability index for IOM
- An integration index to be scaled up by UNHCR

Data Analysis Techniques:

- Expertise-based heuristic approaches whereby seasoned researchers assign intuitive weights to individual indicators;
- Unsupervised methods i.e. Principal Component and Factor Analysis, whereby weights are assigned to indicators based on internal co-variables in the data);
- Supervised methods such as logistic regression classifiers and anomaly detection, which use known outcomes or archetypes to train artificial intelligence engines which then evaluate new datasets.

Figure. Dimensions measured under the MDI



SH EAST AND SOUTH AFRICA COMPLETE LIST OF PROJECTS

GCRF	South-South Migration Hub on Inequity and Migration in Ethiopia-South Africa, Egypt-Jordan and Burkina Faso-Cote d'Ivoire	On-going
EU, PRIO	Aligning Migration Management and the Migration-Development Nexus (MIGNEX): Ethiopia, Somalia and Afghanistan	On-going
DMFA	Outcome, Learning and Evaluation for the Regional Development and Protection Programme (RDPP)	On-going
MELLON FOUNDATION	Mobility, Temporality, and Africa's Future Politics	On-going
SAMUEL HALL	Longitudinal Migration Assessment in Somalia and Afghanistan	On-going
IOM	Labour Market Analysis for Socio-Economic Reintegration of Vulnerable Persons and Returnees in North-East Nigeria	On-going
ILO	Rapid Integrated Labour Market Assessment in Somali and Tigray Regional States	On-going
AKF	End-line Evaluation of Youth Empowerment Programmes in Northern Kenya	On-going
NRC	Cross-Border Displacement of Nigeria and Cameroon in the Lake Chad Basin	On-going
UNEP, IOM	Assessment to Identify Climate Adaptive Solutions to Displacement in Somalia	On-going
UNICEF	National Conflict Analysis of Oromia, Somali and SNNP Regions in Ethiopia	On-going
UNICEF	Context Assessment for Conducting Programming for IDP Children	On-going
NRC	TVET Tracer Study in Kismayo	On-going
ADSP	Study on Learning on Internally Displaced Populations' Experience of Return	On-going
BRITISH COUNCIL	Better Migration Management: Component 4 in Ethiopia, Sudan and Kenya	2019
IOM	Innovative Responses to Assisting Migrants Caught in Crisis – World Migration Report 2020	2019
WORLD BANK	Social Dynamics between Refugees and Hosts in Gambella Region, Somali Region and Addis Ababa	2019
DRC, NRC, IRC	Return and Reintegration of Refugees: Lessons Learned in Somalia, Afghanistan and Syria	2019
UNICEF	Participatory Research with Adolescents to Unpack how Decisions are Made Whether to Stay in School in Zambia	2019
JRS	International Needs Assessment on Professional and Post-Secondary Education in Kenya, Malawi, Chad	2019
WFP	Developing a Social Protection Policy for the Federal Government of Somalia	2019
IOM	Enhancing CSO Engagement in Remittance Research and Building Linkages with the Tech and Banking Sectors	2019
IOM	Community Mapping and Socio-Economic Profiling Assessment of Areas of Return - West and Central Africa	2019

SH EAST AND SOUTH AFRICA COMPLETE LIST OF PROJECTS

ILO	Market Systems Analysis in Dadaab to Improve Refugee Livelihoods	2019
DRC, ReDSS	Longitudinal Solutions Analysis in Baidoa, Kismayo and Mogadishu	2019
IOM	Improving Pre-Departure Assistance in Morocco	2018
DRC, DEMAC	Evaluation of Six Diaspora-Led Humanitarian Interventions in Somalia and Syria	2018
HIF	Innovating Mobile Solutions for Refugees in East Africa	2018
EU	Mid-Term Evaluation of the EU Trust Fund Programme: Support to the Development of Kalobeyei, Kenya	2018
ReDSS, DRC	ReDSS Durable Solutions Framework – Ethiopia Case Study	2018
ILO	Project Document Preparation for Renewable Energy Skills Training PPDP in Somalia	2018
DUBAI CARES	Final Evaluation – Improving Access to and Quality of Early Childhood Development in Zanzibar	2018
IOM	Development of a Methodological Review and Revisions of DTM in Transition and Recovery Response	2018
MERCY CORPS	NWO Mixed Migration Flows	2018
OPEN SOCIETY FOUNDATIONS	Assessment of CSOs' Capacity in Engaging with Forced Displacement in Afghanistan	2018
NRC	Follow-Up Study on IDP Protection Challenges	2018
CHILDREN IN CRISIS	Endline Evaluation for 'Safer Children, Safer Communities' Programme	2017
EAST AFRICA RESEARCH FUND	Understanding Intra-Regional Labour Migration in the East Africa Community (EAC)	2017
BRITISH COUNCIL	Youth Employment in Kenya: Literature Review	2017
IKEA FOUNDATION	Desktop Review Family Tracing and Reunification	2017
CARE	Final Programme Evaluation of the Somalia, Somaliland and Puntland Joint Response	2017
HELPPAGE INTERNATIONAL	Policy Brief - Older People in Situations of Migration in Africa	2017
INSTINCTIF	Public Opinion Surveys in Seven Kenyan Counties	2017
SEISSMO	Olfactive Consumer Studies in Ethiopia, Iran and Pakistan	2017
BRCIS	Research on Trends in Programme Implementation in Southern Somalia	2017

SH EAST AND SOUTH AFRICA COMPLETE LIST OF PROJECTS

ODI	Journeys in Africa	2017
NRC	Strategic Framework to Position in Sustainable and Scalable Programmes on Refugees in Ethiopia	2017
ILO	Scoping Study on Public-Private Development Partnerships in the Renewable Energy Sector	2017
EXPERTISE FRANCE	BMM Appraisal Missions and Rapid Assessment of Safe Houses in Kenya and Ethiopia	2017
SOLIDARITES INTERNATIONAL	Evaluation of the Improving Drought Resilience of Populations in Northern Kenya Project	2017
MERCY CORPS	Qualitative and Quantitative Survey for Somali Youth Leadership Initiative	2016
NRC	Development of Advocacy Package for ICLA and HLP Programmes	2016
IHDG	Joint Analysis of Donor Engagement Related to Livelihoods and Resilience in Somalia	2016
UNICEF	Evaluation of the Youth Education Programme in Somalia	2016
HELPPAGE INTERNATIONAL	Mid-Term Review of the Better Health for Older People in Africa Programme	2016
ReDSS, DRC	Desk Study on Durable Solutions Systems Review	2016
SRC	Assessment of IDP Returns	2016
ADESO, ACTED	Cash Assistance and Recovery Support Project Evaluation	2015
UDI, DRC	Returning to Somalia: Setting Protection and Livelihood Standards	2015
DRC	Evaluation of Assisted Voluntary Returns Programme to Somalia	2015
DRC	Kakuma Refugee Camp Market Assessment and Value Chain Analysis	2015
IOM	Baseline Evaluation of the Partnership for Health and Mobility in Southern Africa	2015
IOM	Migration Profiling Exercise of Kenya	2015
IOM	Evaluation of the Somalia Awareness Raising Programme	2015
UNICEF	Baseline and Evaluability Assessment of the East and Southern Africa Programme	2015
UNHCR	Beyond Copenhagen: A Toolbox for Durable Solutions	2015
IOM	Baseline Evaluation of the Partnership for Health and Mobility in East Africa	2015

SH EAST AND SOUTH AFRICA COMPLETE LIST OF PROJECTS

UNHCR	Assessment of Minimum Standards of Local Integration in Somali	2014
UNHCR	Study on Spontaneous Returns of Somali Refugees from Kenya	2014
IOM	Youth, Employment and Migration Study in Somaliland and Puntland	2014
DRC, UNHCR	Presentation of the New Deal for the Displaced Report	2014
WISE	Participation in the Annual World Innovation Summit for Education	2014
SOMALIA NGO CONSORTIUM	Evaluation of the Somalia NGO Consortium	2014
ReDSS, DRC	Devolution and Transitional Solutions for Refugees in Kenya	2014
ReDSS, DRC	Study of Somalia's New Deal Compact	2014
IOM	Migration Profiling Exercise of Kenya	2014
ILO	Market Assessment and Value Chain Analysis in South Central Somalia	2014
UNHCR	Workshop on Somalia's Return Consortium	2014
UNHCR	Study on Durable Solutions in Somalia	2014
NRC	Study on Options Beyond Camp Assistance in Ethiopia	2013

CONTACTS

HERVÉ NICOLLE

Founder and Director / Resilience Pillar Lead

Paris: + 33 628 40 20 86

Nairobi: + 254 737 197 949

Kabul: + 93 791 531 566

herve.nicolle@samuelhall.org

NASSIM MAJIDI, Ph.D.

Founder and Director / Migration Pillar Lead

Paris: + 33 660 54 86 25

Nairobi: + 254 702 693 651

Kabul: + 93 797 978 206

nassim.majidi@samuelhall.org

